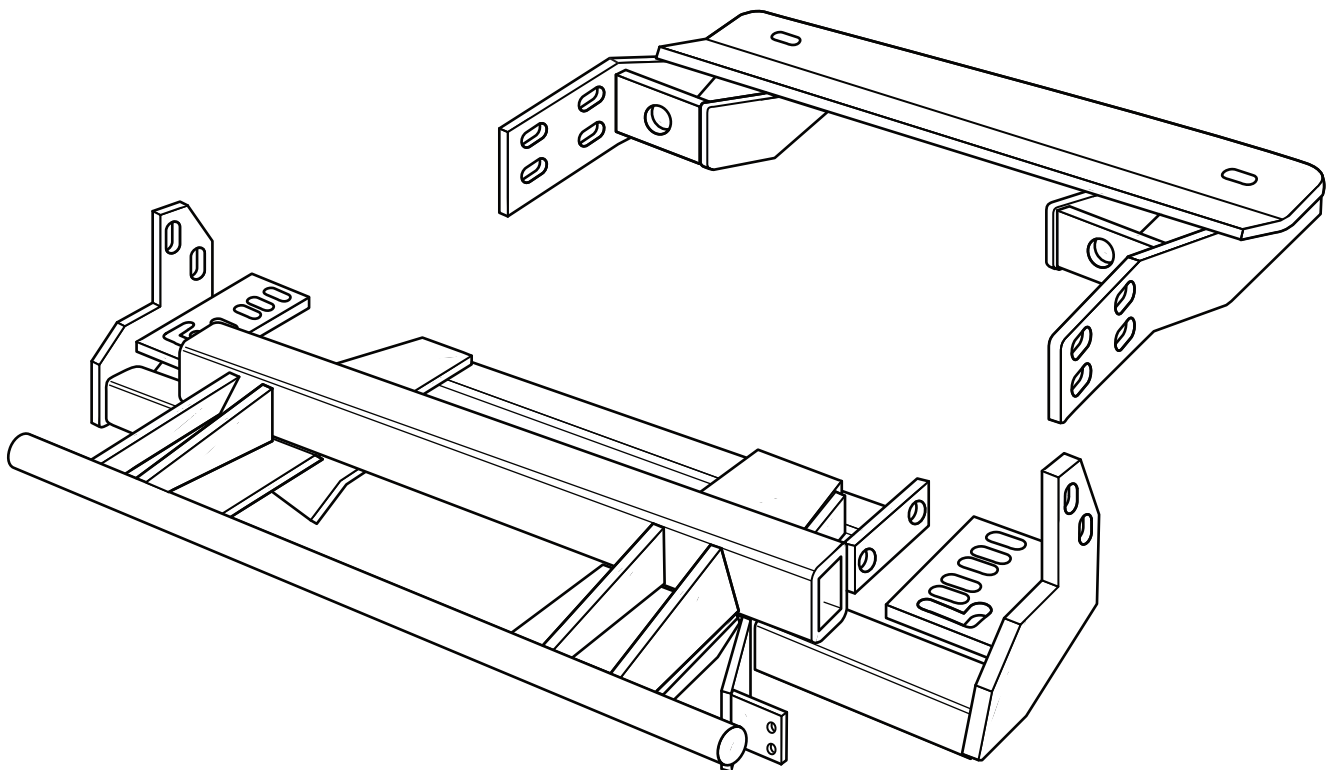




SNO-PRO[®] 3000

**1988 - 1998 Chev. / GMC K-1500, K-2500, K-3500
(4 x 4 With VYU ONLY)**

Vehicle Mounting Kit: 1FK1



Curtis Industries Inc. LLC, 111 Higgins St., Worcester, MA 01606 TEL: (800) 343-7676 FAX: (508) 854-3377 For Parts and information visit us at www.Curtisindustries.net
Curtis Industries Inc. LLC, reserves the right to change product design or specifications without notice or liability.
Curtis Snow Plows are protected by the following U.S. Patent Numbers: 6,145,222 and 6,209,231 Licensed under U.S. Patent Number 5,568,694 & Canadian Patent Number 2,137,853.
Other patents pending.

1FK1 Vehicle Mount Kit Parts List

Item #	Description	Qty.
1	Front Mounting Frame	1
2	Rear Push Frame	1
Hardware Bag Components Included In This Kit		
3	M14-2.0 x 50 mm Bolt, Gr. 10.9, Cad., Plated	4
4	M14 Lock Washer, Cad., Plated	4
5	M14 Flat Washer, Cad., Plated	4
6	1/2"-13 x 1-1/2" Bolt, Gr. 5, Cad., Plated	8
7	1/2" Lock Washer, Cad., Plated	8
8	1/2" Flat Washer, Cad., Plated	8
9	1/2"-13 Hex Nut, Cad., Plated	4
10	1/2" Nut Plate Assembly	2
11	5/8"-11 x 2" Bolting Bar	2
12	5/8"-11 x 2-1/2" Carriage Bolt, Gr. 5, Cad., Plated	2
13	5/8" Lock Washer, Cad., Plated	4
14	5/8"-11 Hex Nut	2
15	5/8"-11 Hex Jam Nut, Cad., Plated	4
16	5/8" Flat Washer, Cad., Plated	4
Hardware Components Included In Plow Light Harness Kit		
1a	Dual Plug Harness Bracket	1
-	10-32 x 3/4" Hex Head Screw, Plated	2
-	10-32 Nylock Lock Nut, Plated	2
-	8-32 x 1" Hex Head Screw, Plated	1
-	8-32 Nylock Lock Nut, Plated	1
-	#8 Nylon Flat Washer, 3/4" O.D.	1
-	#8 Flat Washer, SAE, Plated	1

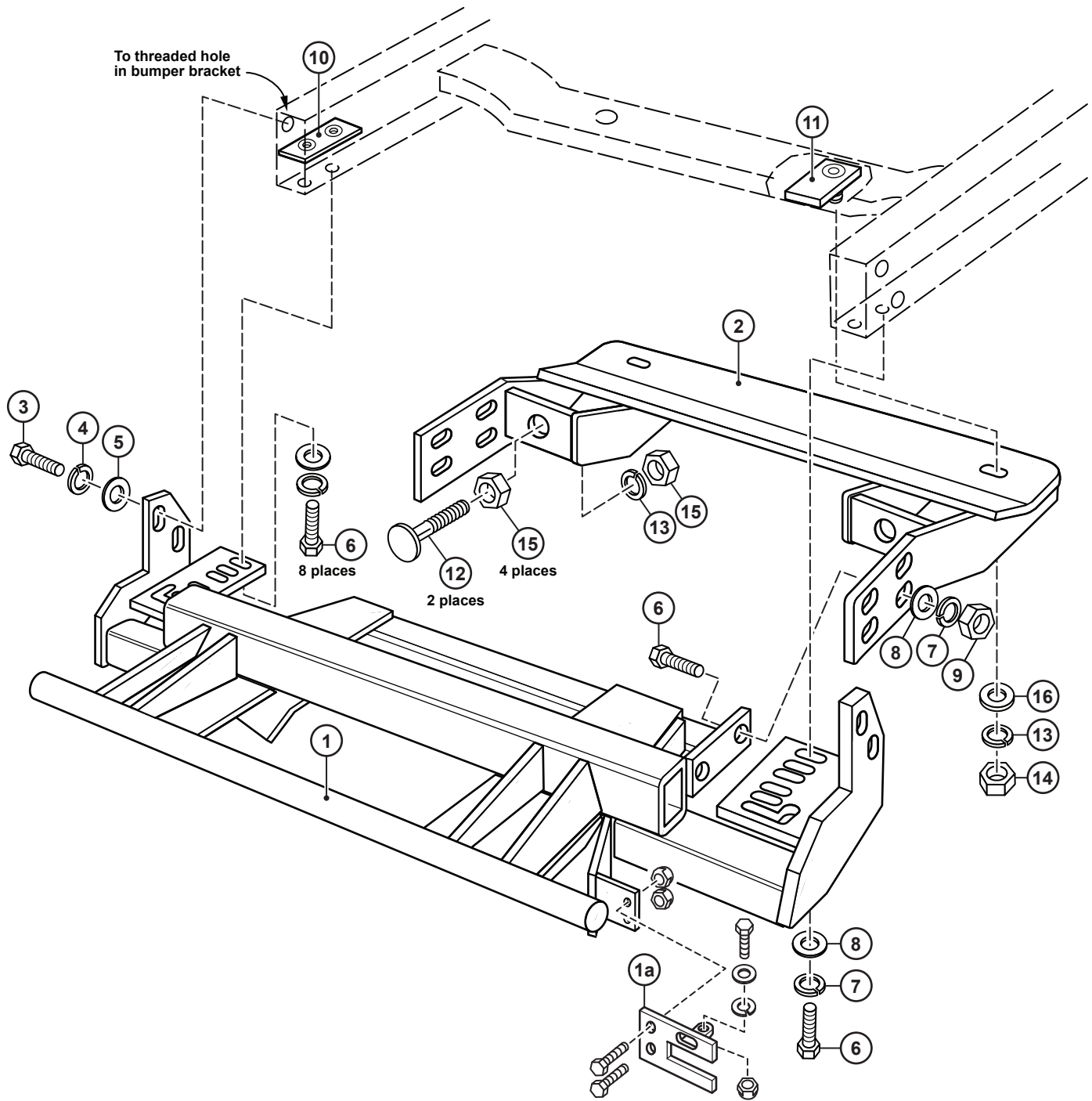


WARNING

It is highly recommended that front "helper springs", "airshocks", or other similar devices be installed onto this vehicle to prevent the front suspension from "bottoming out" while carrying a snow plow.

Vehicle must be properly "ballasted" by placing ballast weight behind the centerline of Rear Axle so that no more than 62% of the total weight of the Vehicle, Snow Plow, Driver, Ballast weight, (and any cargo) is placed on the Front Axle while at the same time not exceeding the Gross Vehicle Weight Rating and Front or Rear Gross Axle Weight Ratings.

1FK1 Mounting



Curtis Industries, LLC. reserves the right to change product design or specifications without notice or liability. Curtis Snow Plows and Truck equipment should only be used on vehicles equipped with the manufacturer's Snow Plow preparation package. Snow Plowing without the original snow plow preparation package may damage your vehicle and the added weight of the equipment may impair the operation and control of the vehicle

1FK1: 1988 - 1998 Chevrolet/ GMC K-1500, K-2500, K-3500 4 x 4

Mounting Kit Installation Instructions

1. VEHICLE PREPARATION

- (1a.) Remove and discard the vehicle tow hooks, fasteners, and bolting plates. Drill out the two tow hook mounting holes in each frame rail to 9/16" diameter. Either remove the vehicle air dam and fasteners or cut and remove a section 36" long out of the center of it. Remove and discard the forward two 14 mm bolts holding each vehicle bumper bracket to the frame rails.
- (1b.) Place a 1/2"-13 nut plate assembly (10) inside each frame rail with the threaded holes lined up with the tow hook mounting bolt holes. From inside the vehicle boxed front cross member, install two 5/8"-2" bolting bars (11) with the threaded ends of the bolts down through the two holes in the bottom surface. Screw a 5/8"-11 hex jam nut (15) all the way onto each of the 5/8"-11 x 2-1/2" carriage bolts (12). Place each carriage bolt / jam nut assembly into the push ears of the rear push frame (2) with the heads of the carriage bolts toward the front of the vehicle. Fasten loosely using a 5/8"-11 hex jam nut (15) and 5/8" lockwasher (13) on each carriage bolt / jam assembly.



NOTE

All fasteners should remain loose or "finger tight" until all components have been attached to vehicle or installation instructions specify tightening.

2. FRONT MOUNTING FRAME

Place the front mounting frame (1) up onto the front of the vehicle frame with the slotted holes in the vertical ears lined up with the holes in the frame rails that the 14mm bumper bracket bolts were removed from. Attach using two M14-2.0 x 50mm bolts (3), M14 lockwashers (4), and M14 flatwashers (5) through each frame rail into the threaded holes in the bumper brackets. Line up two (of the four) slotted holes in each of the horizontal ears of the front mounting frame (1) with the tow hook bolt holes in each frame rail. Fasten using two 1/2"-13 x 1-1/2" bolts (6), 1/2" lockwashers (7), and 1/2" flatwashers (8) up through each frame rail into the threaded holes in the 1/2" nut plate assemblies (10) inside the frame rails.

3. REAR PUSH FRAME

Place the rear formed cross piece of the rear push frame (2) up onto the vehicle front cross member with the bolts of the 5/8"-11 bolting bars (11) (previously installed inside the vehicle cross member) down through the holes in the cross piece. Fasten using 5/8" flatwashers (16), 5/8" lock washers (13) and 5/8"-11 hex nuts (14). Line up two slotted holes (on each side) in the front section of the rear push frame (2) with the holes in the end plates of the lower cross beam on the front mount frame (1). Attach using 1/2"-13 x 1-1/2" bolts (6), 1/2" flat washers (8), 1/2" lock washers (7), and 1/2"-13 hex nuts (9).

4. TIGHTENING

- (4a.) Tighten the four 1/2"-13 bolts (6) holding the horizontal ears of the front mounting frame (1) to the bottom flange of the frame rails. Tighten the four 14mm bolts (3) holding the vertical ears of the front mounting frame (1) to the outside flange of the frame rails. Tighten the two 5/8"-11 hex nuts (14) holding the rear formed cross piece of the rear push frame (2) to the vehicle front cross member.
- (4b.) Tighten the four 1/2"-13 bolts and hex nuts holding the rear push frame (2) to the front mounting frame (1).

Adjust the 5/8"-11 x 2-1/2" carriage bolts (12) with the front 5/8"-11 jam nuts (15) so that the heads of the carriage bolts are tight against the back of the rear cross tube of the front mounting frame (1). Lock the 5/8"-11 x 2-1/2" carriage bolts (12) in place using the rear 5/8"-11 jam nuts (15).

5. FINAL ASSEMBLY AND INSPECTION

- (5a.) Check the front bumper to be certain that it is straight and aligned with the vehicle body work and grill. (If necessary, loosen the 14mm bolts holding the front mounting frame (1) and bumper brackets to the frame, align the bumper, then retighten the 14mm bolts.)
- (5b.) Inspect the mounting attachment bolts to be certain that they are all in place and that they are all tight.

6. OPTIONAL PLUG MOUNT BRACKET INSTALL



NOTE

Install the Plug Mount Bracket if the harness will be mounted on the frame kit, otherwise, the harness may be routed through the grill, bumper, etc.

Install the Plug Mount Bracket if the harness will be mounted on the frame kit, otherwise, the harness may be routed through the grill, bumper, etc. Using (2) 10-32 x 3/4" hex bolts and nylon locknuts, fasten the Plug Mount Bracket to the Plug Mount Bracket Mounting Tab located on the driver's side of the frame kit receiver. The included 8-32 hardware is used for mounting the hi-amp battery leads to the Plug Mount Bracket if used.

